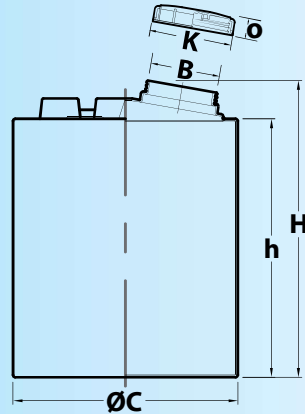
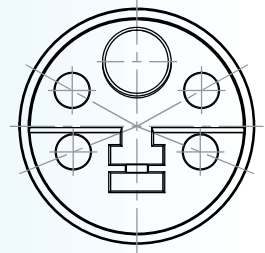


**CEN-B**


TIS 1379-2551



Top View



Part Number	Capacity (Litre)	Approx. Dimension (mm)					Part Number	Approx. Dimension (mm)			Approx. Total Weight (kg)
		B	C	H	h	Thk.		K	O	Thk.	
CEN050B-M114	50	150	380	550	480	3.5	CT0150B-HX29	150	40	2.0	3.18
CEN050B-M4X6						4.0					3.68
CEN050B-M115						5.0					4.18
CEN050B-M116						6.0					5.18
CEN100B-M5X6	100	150	500	660	575	3.5	CT0150B-HX29	150	40	2.0	4.68
CEN100B-M116						4.0					5.18
CEN100B-M118						5.5					7.18
CEN100B-M0X6						7.5					9.68
CEN200B-M118	200	150	650	750	670	3.5	CT0150B-HX29	150	40	2.0	7.18
CEN200B-M119						4.0					8.18
CEN200B-M123						6.0					12.18
CEN200B-M126						7.5					15.18
CEN300B-M122	300	150	650	1,050	970	4.0	CT0150B-HX29	150	40	2.0	11.18
CEN300B-M124						5.0					13.18
CEN300B-M126						5.5					15.18
CEN300B-M131						7.5					20.18
CEN500B-M127	500	395	870	1,040	915	4.5	CT0395-M1X8	395	90	3.0	16.70
CEN500B-M129						5.0					18.70
CEN500B-M131						5.5					20.70
CEN500B-M138						7.5					27.70
CEN1K0B-M141	1,000	395	1,030	1,540	1,390	5.0	CT0395-M1X8	395	150	3.0	30.70
CEN1K0B-M144						5.5					33.70
CEN1K0B-M156						7.5					45.70
CEN1K0B-M168						9.5					57.70
CEN1K0B-M171						10.0					60.70
CEN1K5B-M154	1,500	395	1,300	1,430	1,280	5.5	CT0395-M1X8	395	150	3.0	43.70
CEN1K5B-M158						6.0					47.70
CEN1K5B-M166						7.0					55.70
CEN1K5B-M180						10.0					79.70
CEN2K0B-M167	2,000	395	1,300	1,800	1,650	6.0	CT0395-M1X8	395	150	3.0	56.70
CEN2K0B-M177						7.0					66.70
CEN2K0B-M186						8.0					75.70
CEN2K0B-M105						10.0					94.70
CEN2K5B-M173	2,500	395	1,300	2,050	1,900	6.0	CT0395-M1X8	395	150	3.0	62.00
CEN2K5B-M184						7.0					73.00
CEN2K5B-M194						8.0					83.00
CEN2K5B-M211						10.0					100.00
CEN3K0B-M180	3,000	395	1,300	2,550	2,400	6.0	CT0395-M1X8	395	150	3.0	69.00
CEN3K0B-M103						7.0					92.00
CEN3K0B-M216						8.0					105.00
CEN3K0B-M242						10.0					131.00